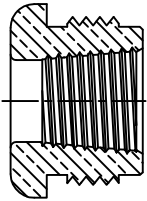
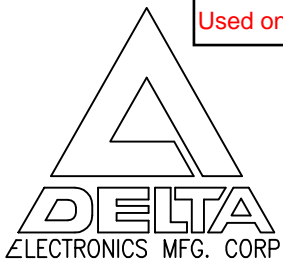
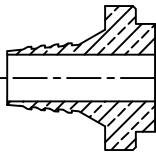


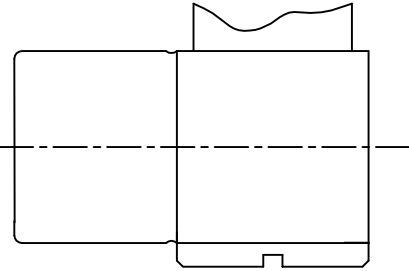
CABLE ASSEMBLY INSTRUCTIONS  
 FOR  
 4205-018-N995



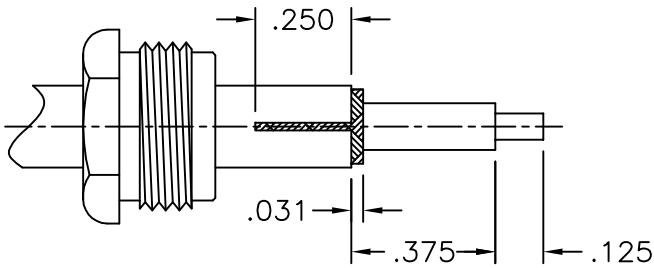
CLAMP NUT



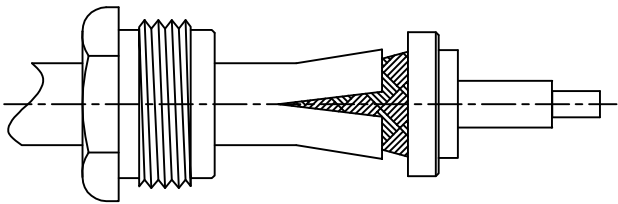
BRAID CLAMP



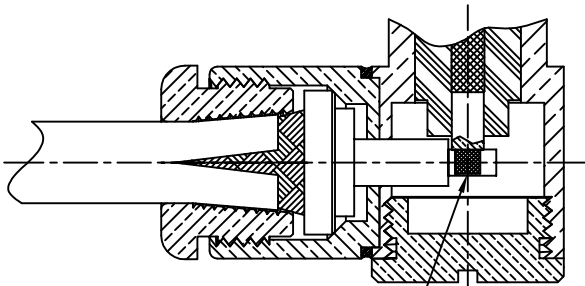
CONNECTOR BODY



SLIDE CLAMP NUT ONTO CABLE AS SHOWN  
 TRIM CABLE TO DIMENSIONS SHOWN.  
 SLIT JACKET TO DIMENSION SHOWN IN TWO PLACES,  
 180° APART.



SLIDE BRAID CLAMP UNDER BRAID UNTIL BRAID  
 IS FLUSH WITH SHOULDER.



SOFT SOLDER

INSERT ASSEMBLY INTO CONNECTOR BODY, BEING CERTAIN  
 THAT BRAID CLAMP IS SEATED. TIGHTEN CLAMP NUT WITH  
 A WRENCH. SOLDER CABLE CONDUCTOR INTO SLOT OF  
 CENTER CONTACT. SCREW CAP IN PLACE SECURELY.

DELTA ELECTRONICS MFG. CORP. Beverly, MA 01915

TITLE: CABLE ASSEMBLY INSTRUCTIONS  
 4205-018-N995 USING RG-55B & 58C/U CABLES

Drawn by BJM 10/30/99	Scale 4/1	Ckd. by	FILE NAME: CAI-339	REVISION —
-----------------------------	--------------	---------	-----------------------	---------------

CODE IDENT.-00795

CAI-339